

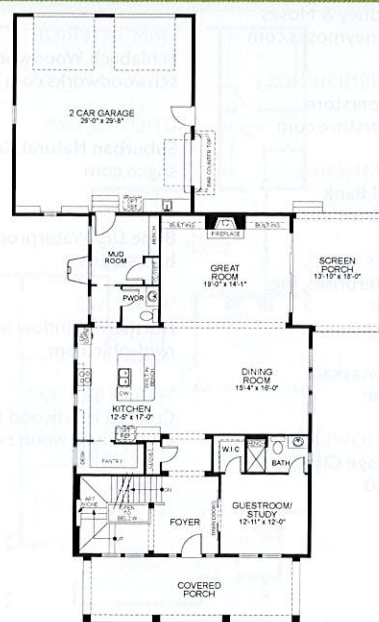


**5745 Evans Farm Drive**  
**4,313 sq. ft.**  
**5 Bedrooms**  
**4.5 Bathrooms**  
**3 Car Garage**  
**\$797,000**

### MUST SEE

Reclaimed wood from local Ohio barns has been repurposed for shelves in the kitchen and the bar top. The outdoor courtyard bar is accessed from the inside and provides the ultimate entertaining space.

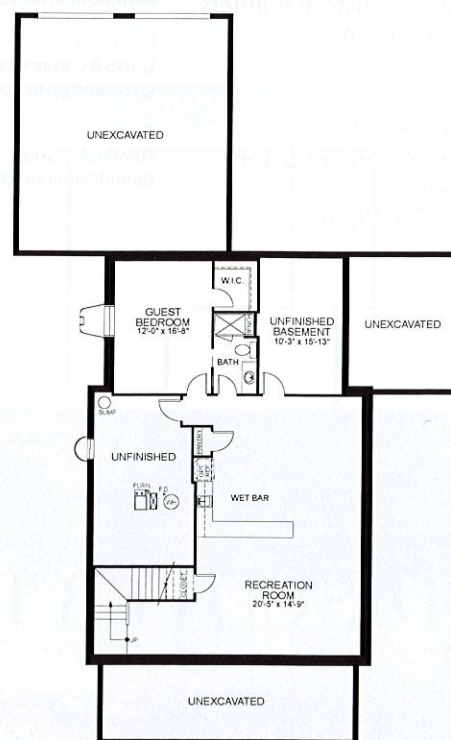
### FIRST FLOOR



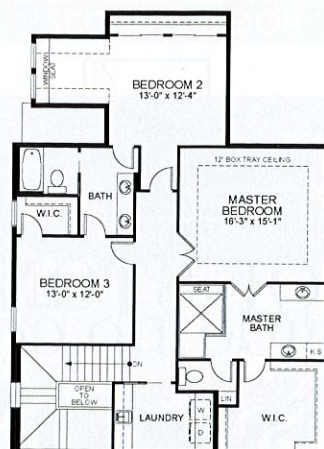
### OUTSTANDING FEATURES

- A private nook under the stairs is a perfect spot to sit down with your favorite book
- Gaming area upstairs creates a perfect space for a kids hangout
- Stunning porcelain countertops
- Expansive multi-panel slider from the screened porch into the great room

### LOWER LEVEL



### SECOND FLOOR



### MEET THE BUILDER



In choosing the right building company, clients seek experience – at P&D Builders you will find an entire team of dedicated professionals with years of combined education and experience, each a specialist in their area of expertise. With this combined knowledge, P&D Builders creates original homes with exceptional attention to your individual needs.

[pndbuilders.com](http://pndbuilders.com)

### HOME DESIGN

SBA Studios  
[sba-studios.com](http://sba-studios.com)  
 (614) 562-7761

### INTERIOR DESIGN

Michael David Design Center  
[riterug.com](http://riterug.com)  
 (614) 416-4246

### LANDSCAPE DESIGN

Simes Landscape, Inc.  
[simeslandscape.com](http://simeslandscape.com)  
 614-332-0335

### MEET THE TEAM

at the P&D Builders Home  
 July 26, 1:00 - 2:00pm

### CONTRIBUTORS

**APPLIANCES**  
 Kitchens Inspired by Big Sandy Superstore  
[bigsandysuperstore.com](http://bigsandysuperstore.com)

**AUDIO/VIDEO/SECURITY**  
 McPherson Connected Systems  
[mcphearson-cs.com](http://mcphearson-cs.com)

**BATH FIXTURES**  
 Carr Supply Co., Inc.  
[carrsupply.com](http://carrsupply.com)

**CABINETS**  
 Distinctive Kitchen and Bath  
[distinctivekitchen.com](http://distinctivekitchen.com)

**CARPENTRY**  
 The Dublin Framing Company  
 (614) 554-6266

**COUNTERTOPS**  
 Distinctive Marble & Granite  
[distinctivemarbleandgranite.com](http://distinctivemarbleandgranite.com)

**DOORS**  
 Holmes Lumber, Inc.  
[hlbc.com](http://hlbc.com)

**EXCAVATING/EARTHWORK**  
 Shepherd Excavating, Inc.  
[shepherdexcavating.com](http://shepherdexcavating.com)

**FLOORING, CARPET**  
 Michael David Design Center  
[riterug.com](http://riterug.com)

**FLOORING, HARDWOOD**  
 Michael David Design Center  
[riterug.com](http://riterug.com)

**FLOORING, TILE/CERAMIC**  
 Michael David Design Center  
[riterug.com](http://riterug.com)

**FOUNDATION**  
 Shepherd Excavating, Inc.  
[shepherdexcavating.com](http://shepherdexcavating.com)

**FRAMING**  
 The Dublin Framing Company  
 (614) 554-6266

**GARAGE FLOOR COATING**  
 Garage Floor Coating of Columbus  
[garagefloorcoating.com](http://garagefloorcoating.com)

**GAS/WATERLINE SERVICES**  
 Shepherd Excavating, Inc.  
[shepherdexcavating.com](http://shepherdexcavating.com)

**GRADING**  
 Shepherd Excavating, Inc.  
[shepherdexcavating.com](http://shepherdexcavating.com)

**GUTTERS/DOWNSPOUTS**  
 Gale Insulation  
[truteam.com](http://truteam.com)

**HOUSEWRAP**  
 Graves Lumber Company  
[graveslumber.com](http://graveslumber.com)

**INSULATION**  
 Gale Insulation  
[truteam.com](http://truteam.com)

**LENDER/FINANCING**  
 Park National Bank  
[parknationalbank.com](http://parknationalbank.com)

**LIGHTING FIXTURES**  
 Capital Lighting  
[capitallightinginc.com](http://capitallightinginc.com)

**LUMBER**  
 Graves Lumber Company  
[graveslumber.com](http://graveslumber.com)

**PAINT & FINISH, EXTERIOR**  
 RJH Painting, LLC  
[rjhpainting.com](http://rjhpainting.com)

**PAINT & FINISH, INTERIOR**  
 RJH Painting, LLC  
[rjhpainting.com](http://rjhpainting.com)

**PLUMBING SUPPLIER**  
 Carr Supply Co., Inc.  
[carrsupply.com](http://carrsupply.com)

**PORCH FLOORING**  
 AZEK Building Products  
[azekco.com](http://azekco.com)

**SIDING MATERIAL CONTRACTOR**  
 Fifth Avenue Lumber  
 (614) 554-7079

**STEEL**  
 Suburban Steel Supply Co., LLC  
[suburbansteelsupply.com](http://suburbansteelsupply.com)

**SURVEYING**  
 Landmark Survey Group, Inc.  
[landmarksurvey.com](http://landmarksurvey.com)

**TRENCHING**  
 Shepherd Excavating, Inc.  
[shepherdexcavating.com](http://shepherdexcavating.com)

**UTILITIES, ELECTRIC**  
 American Electric Power - Ohio  
[aepohio.com](http://aepohio.com)

**UTILITIES, GAS**  
 Suburban Natural Gas  
[pomeroassoc.com](http://pomeroassoc.com)

**WATERPROOFING**  
 Tremco Barrier Solutions  
[tremcoinc.com](http://tremcoinc.com)

**WINDOW TREATMENTS**  
 Michael David Design Center  
[riterug.com](http://riterug.com)

**WINDOWS**  
 Pella Windows & Doors  
[www.guntonpella.com](http://www.guntonpella.com)

**Live. Dream. Create.**

**Distinctive Kitchen & Bath**  
 The Cabinet and Countertop Experts

**Distinctive Kitchen & Bath**

(614) 431-0898    [distinctivekitchen.com](http://distinctivekitchen.com)    6325 Busch Blvd., Columbus OH 43229



# MEET The Team



Fourteen homes are ready to stun you with their beauty and diversity at this year's BIA Parade of Homes, presented by Chase.

But for every home there are innumerable folks who worked tirelessly to make it happen. And you'll have the opportunity to meet many of them throughout the Parade's 16-day run at Evans Farm in Lewis Center.

This year's Meet the Team series features the builders, interior designers and landscapers who worked on each of the 14 homes in person at the home they worked on. They will be on hand at the times below to discuss what goes into creating a Parade home – inside and out, front to back. They'll also talk about the latest trends, offer some tips and tricks and answer your burning questions.

And if you can't make it? Many of the Meet the Team sessions will be streamed live and archived at the Parade of Homes' Facebook page, [facebook.com/biaparade](https://facebook.com/biaparade).

A tree-lined boulevard centers the site of the 2019 BIA Parade of Homes, presented by Chase. The neighborhood as portrayed here was captured by a drone camera on June 12.



## Meet the Team Schedule

Monday, July 15  
2-3 p.m.

**Coppertree Homes**

Tuesday, July 16  
1-2 p.m.

**3 Pillar Homes**

(takes place at the 3 Pillar BIA Foundation Home; Home #5)

Tuesday, July 16  
2-3 p.m.

**3 Pillar Homes**

(takes place at the 3 Pillar home; Home #6)

Wednesday, July 17  
1-2 p.m.

**Maronda Homes**

(takes place at Home #9)

Wednesday, July 17  
2-3 p.m.

**Maronda Homes**

(takes place at Home #10)

Thursday, July 18  
2-3 p.m.

**Arthur Rutenberg Homes**

Friday, July 19  
1-2 p.m.

**Bob Webb Homes**

Friday, July 19  
2-3 p.m.

**Stonecliff Homes**

Monday, July 22  
2-3 p.m.

**Sierra Custom Homes**

Tuesday, July 23  
2-3 p.m.

**ALTA Design Build**

Wednesday, July 24  
2-3 p.m.

**Kenric Fine Homes**

Thursday, July 25  
2-3 p.m.

**Guzzo & Garner Custom Builders**

Friday, July 26  
1-2 p.m.

**P&D Builders**

Friday, July 26  
2-3 p.m.

**Cua Builders**

Catch live streams of the 2019 Meet the Team sessions

[f /biaparade](https://facebook.com/biaparade)



## MEET OUR Special Guests



You've watched them on HGTV,  
now see them live at the Parade

TV personalities Drew and Jonathan Scott will appear live at the 2019 BIA Parade of Homes, presented by Chase, at 2:30 p.m. on Sunday, July 21. Their appearance is made possible by Chase.

Here's a brief look at the dynamic duo who have been a part of every home design fan's lives for – can it be? – more than eight years.

Drew and Jonathan Scott are multifaceted entrepreneurs, authors and twin television personalities. They are the co-founders of Scott Brothers Global, a leading lifestyle and entertainment enterprise that includes the award-winning production company Scott Brothers Entertainment, the home furnishings collection Scott Living, and the digital design and renovation platform Casaza.

The Scott Brothers also host multiple top-rated HGTV series, including the Emmy-nominated and Canadian Screen Awards-winning *Property Brothers* and *Brother vs. Brother*, as well *Forever Home*, which debuted in May.

Their shows are enjoyed by millions of viewers in over 160 countries. While their primary viewing audience is women, they also boast the largest male and youth audience on the network.

All three of their books—*Dream Home*, *It Takes Two: Our Story* and *Builder Brothers: Big Plans*—are New York Times best-sellers, and in 2017, Drew and Jonathan were named Habitat Humanitarians, the highest recognition awarded by Habitat for Humanity.

With over 18 million monthly TV viewers and 10 million followers across their digital platforms, Drew and Jonathan represent the pinnacle



DREW & JONATHAN SCOTT

EVANS FARM // LEWIS CENTER • BIAPARADE.COM

of a lifestyle entertainment brand. Through Scott Brothers Entertainment, they create premium unscripted content and successful brands through projects that feature internationally recognized entertainment and lifestyle trailblazers.

In addition to their broadcast and digital reach, the brothers' home furnishing, textiles and décor line, Scott Living, has thousands of products available in major retail outlets across the U.S. and Canada, including Lowe's, Michaels, Amazon, Wayfair, The Brick and, coming later this year, Kohl's. Scott Living stands for attainable quality and currently works with 22 leading licensees to deliver the best products to its consumers worldwide.

The brothers also appear regularly on QVC, where they offer distinctive collections designed exclusively for QVC's audience.

Drew and Jonathan have graced countless magazine covers, from *Entrepreneur* to *HGTV Magazine*, and their 2016 issue of *People* was the revered weekly's highest-grossing of that year.

They have also been featured in *Forbes*, the *Wall Street Journal* and the *New York Times*, as well as on *Entertainment Tonight*, *Today* and *Live with Kelly and Ryan*.

With fans spanning five continents, Drew and Jonathan tour the globe regularly, appearing live before thousands of people annually. Their Mall of America appearance in 2018 garnered the second-largest crowd in the mall's history, second only to the British boy band, One Direction.

For more information, visit [TheScottBrothers.com](http://TheScottBrothers.com).

EVANS FARM // LEWIS CENTER • BIAPARADE.COM



## NEW MODEL HOME NOW OPEN! HEATHER RIDGE

FROM THE  
**\$330's**

OLENTANGY SCHOOLS

CONTACT MORGAN MONACO:

614-648-9822

MM@SCHOTTENSTEINHOMES.COM

\*All plans, pricing, terms and conditions are subject to change without notice.

## Honor. Quality. Design.



In a desirable subdivision or on your lot, let us build your dream home.

Visit us at one of our models

Meadows at Lewis Center • Evans Farm  
Jerome Village • Tuscana at Tartan West  
Estates at Pinnacle Club

614-845-6055



3pillar.com

BIA PARADE OF HOMES 2019 | THE COLUMBUS DISPATCH 79